



Samuel Oschin Air and Space Center

TEAM ENDEAVOUR SPONSOR YOUR TILE



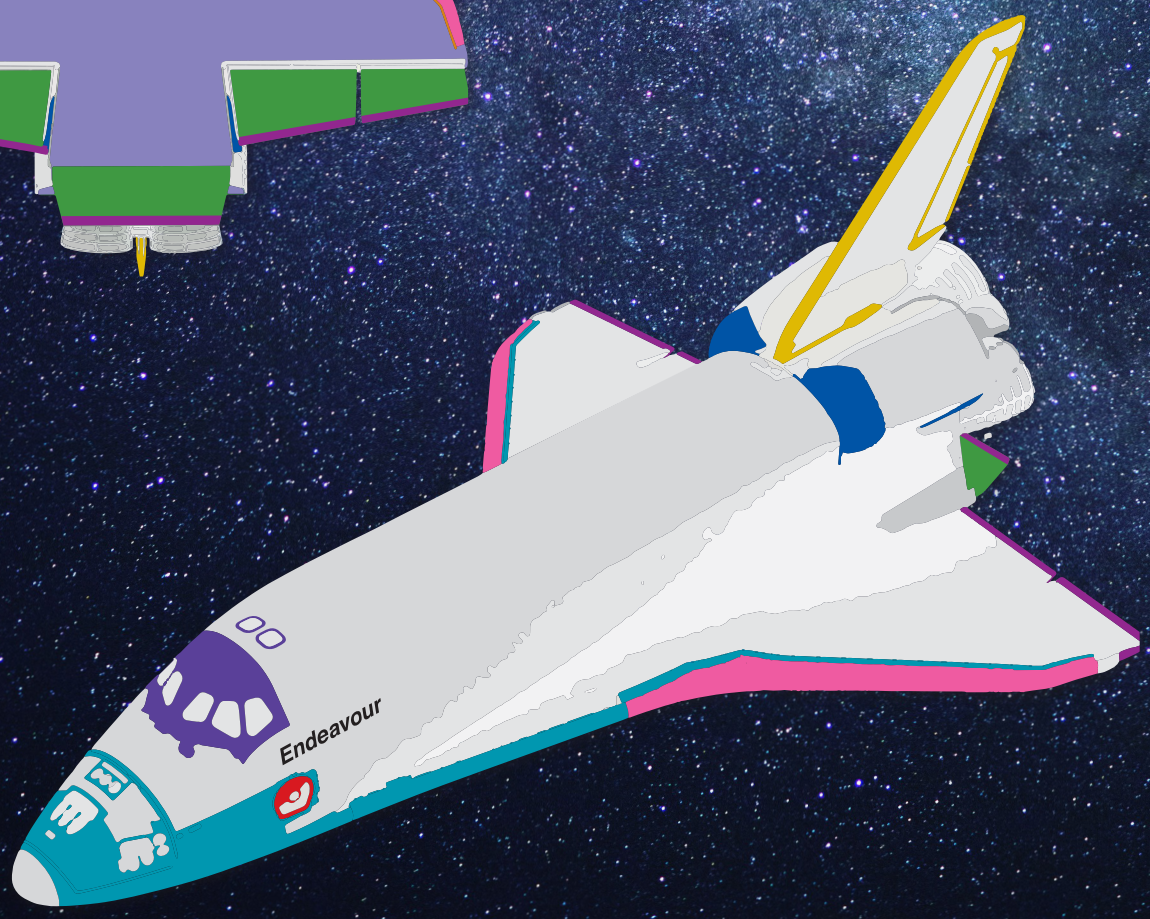
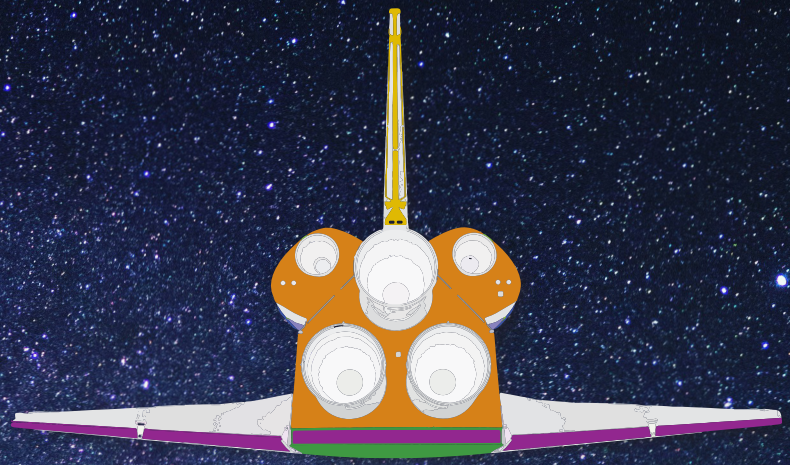
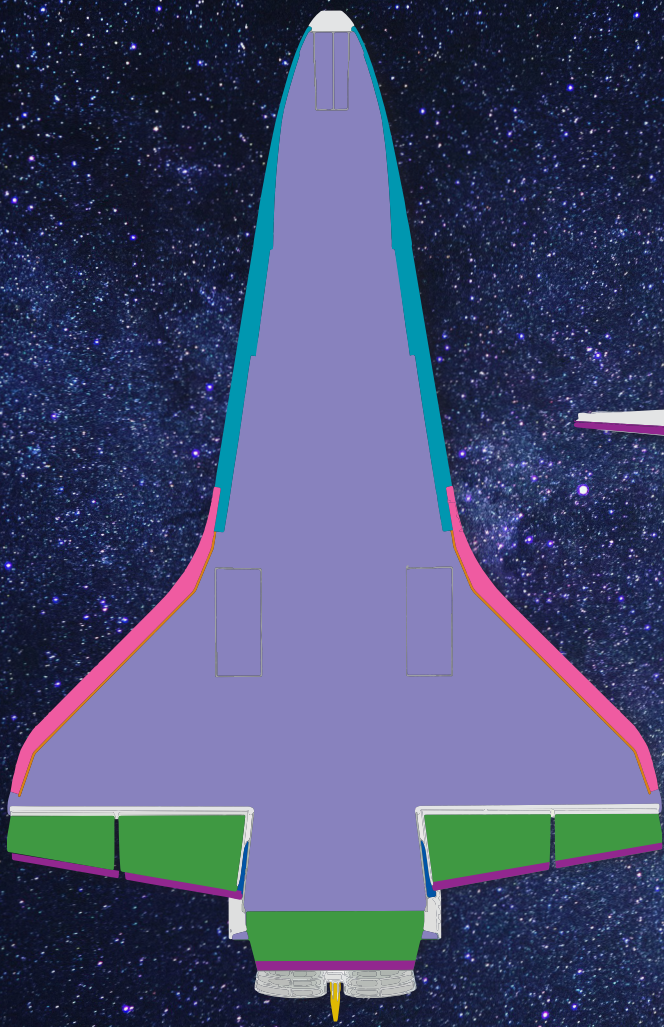


Be Part of Endeavour's Enduring Mission

The 23,000 tiles that make up *Endeavour's* thermal protection system were essential to getting the shuttle home safely after every one of its 25 journeys to space. These tiles are a lasting reminder of *Endeavour's* many historic moments and scientific breakthroughs throughout its 299 days in orbit.

Now you can help continue the mission. By sponsoring a tile, you become part of Team Endeavour and support the development of the Samuel Oschin Air and Space Center—a major expansion to the California Science Center where *Endeavour* will be displayed permanently in launch position.

Join Team Endeavour today and be part of *Endeavour's* enduring mission to inspire the next generation of scientists, engineers and explorers.



Team Endeavour Sponsorship Form (page 1)

I will support Team Endeavour with a tile sponsorship of:

- \$1,000 \$2,500 \$5,000 \$10,000 \$25,000 \$50,000

DONOR INFORMATION

Name _____

Organization (if applicable) _____

Address _____

_____ Bus. Home

Phone _____ Bus. Home Mobile

Email _____

PAYMENT INFORMATION

- Check is enclosed payable to California Science Center Foundation
 Charge in full now Charge in 10 equal monthly installments
 Visa Mastercard American Express

Account # _____ Exp. Date _____ CVC _____

Signature _____ Date _____

For sponsorship of \$10,000 and above, please call (213) 744-2035 if you wish to arrange an alternative payment schedule.

GIFT RECOGNITION

Tile Dedication

Tile sponsor **or** honoree name to appear on interactive Team Endeavour donor display (50 character limit with spaces). Include names only (Ex: Jane and John Smith; In Honor of Jane Smith; In Memory of John Smith).

Donor Recognition

Name to appear in EndeavourLA Campaign donor lists if different from tile dedication above (50 character limit with spaces).

Please return enrollment form with your contribution to:

Team Endeavour, Development Office
California Science Center Foundation
700 Exposition Park Drive
Los Angeles, CA 90037

tel: (213) 744-2035
fax: (213) 744-2240
email: teamendeavour@californiasciencecenter.org
EndeavourLA.org

If you would like to submit the form online, please visit our [website](#).

Team Endeavour Sponsorship Form (page 2)

Select your tile level and location by checking a box below (color corresponds to *Endeavour* diagram) and complete the contact and payment information on the reverse side.

\$1,000 **Lower Fuselage or Wings**

\$2,500 **Upper Fuselage or Wings**

\$5,000 **Orbital Maneuvering Systems (OMS) Pods**
 Base Heat Shield

\$10,000 **Elevons/Body Flap**
 Vertical Stabilizer/Rudder-Speedbreak

Includes opportunity to create a personalized message*

\$25,000 **Flight Deck Canopy**
 Crew Hatch

Includes opportunity to create a personalized message* and recognition on the EndeavourLA Campaign donor wall in the Samuel Oschin Air and Space Center

\$50,000 **Wing Leading Edge**
 Trailing Edge

Includes opportunity to create a personalized message* and recognition on the EndeavourLA Campaign donor wall in the Samuel Oschin Air and Space Center

*Personalized message (100 character limit with spaces) is in addition to tile dedication

Your tile dedication and its location will appear on a 3D model of space shuttle *Endeavour* in an interactive donor display in the Samuel Oschin Air and Space Center.





Our Biggest Endeavour Yet!

The Samuel Oschin Air and Space Center is the centerpiece of Phase III of the California Science Center's three-decade Master Plan. This major expansion will feature three multi-level galleries—Samuel Oschin Shuttle Gallery, Korean Air Aviation Gallery, and Kent Kresa Space Gallery—including space shuttle *Endeavour* in an awe-inspiring vertical display.

Hands-on exhibits, immersive experiences and authentic artifacts will show dreams becoming reality, exploration leading to discovery, and the science behind it all.

Learn more about the project at EndeavourLA.org

